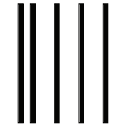
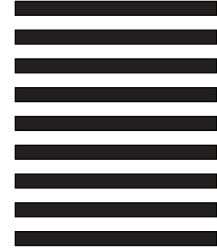




Name: _____
 Street: _____
 City/State/Zip: _____



NO POSTAGE
 NECESSARY
 IF MAILED
 IN THE
 UNITED STATES



BUSINESS REPLY MAIL
 FIRST-CLASS MAIL PERMIT NO. 369 DETROIT, MI

POSTAGE WILL BE PAID BY ADDRESSEE

LG HAND HELD DEVICE RECYCLING PROGRAM
 C/O GLOBAL ELECTRIC ELECTRONIC PROCESSING (GEEP)
 12237 BEECH DALY RD
 REDFORD MI 48239-9935



QUICK FAQS

1. ARE YOU ONLY ACCEPTING CELL PHONES & ACCESSORIES?

Yes. Cell phones and small cell phone accessories will be collected and recycled. All other electronic devices will *NOT* be accepted.

2. HOW DO I PACKAGE MY PHONE FOR MAILING?

- Terminate or transfer your current phone service.
- Make sure to remove all personal information from the device - *protect your data!*
- Find a small package to securely enclose your phone (box or bubble envelope).
- Print and detach the label (cut along indicated crop marks) and apply to your package.
- Securely tape all edges of the label and ensure that the package is sealed.
- Drop off - United States Postal Service mail - *we'll cover the cost of postage!*

3. WHAT HAPPENS WHEN MY PHONE ARRIVES?

When you recycle your cell phone with LG, it is shipped to GEEP's state-of-the-art processing facility, where it is recycled using environmentally friendly and sustainable operational practices. With a mission of 100% landfill diversion, *GEEP is the responsible alternative!*

4. I HAVE DATA ON MY PHONE - WHAT SHOULD I DO?

Cell phones received at GEEP enter a series of shredding, granulating and separation processes, which guarantee to achieve 100% data destruction on your device. However, to ensure data protection during transit, please clear all personal information before placing device in the mail.

5. ADDITIONAL QUESTIONS - WHO DO I CONTACT?

If you have additional questions or concerns, please feel free to contact GEEP's Customer Service team:

P (313) 937 5350

E LGmailback@geepglobal.com

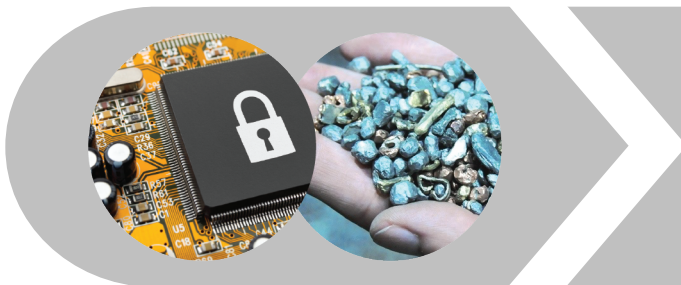
DATA SECURITY

ASSET MANAGEMENT

REMARKETING

RECYCLING

COMMODITY TRADING



geep®

Global Electric Electronic Processing